

# END@GUIDE<sup>®</sup>

PRECISION MICRO ENDODONTIC BURS

New Designs For Endodontic Access and Exploration



Precision Endodontic Access  
and Exploration Burs

PRACTICE INSPIRATION<sup>™</sup>

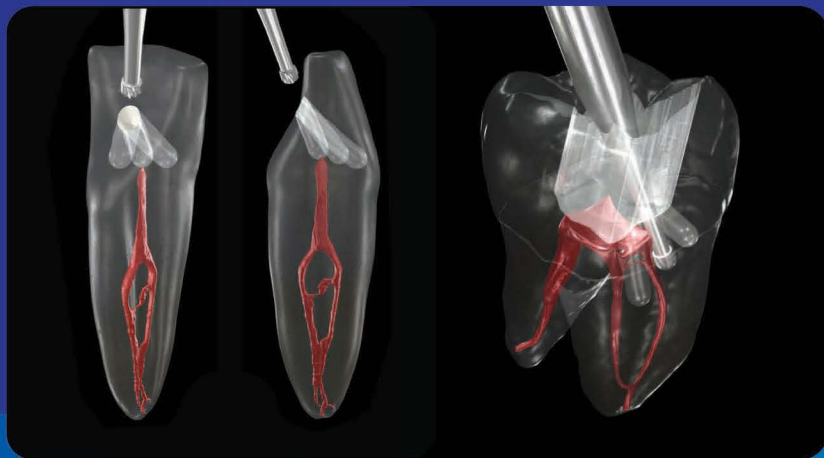
**SSWHITE<sup>®</sup>**

800.535.2877 | [www.sswiteburs.com](http://www.sswiteburs.com)

# Round and Fissure Burs: Design Creates Limitations in Endodontic Access

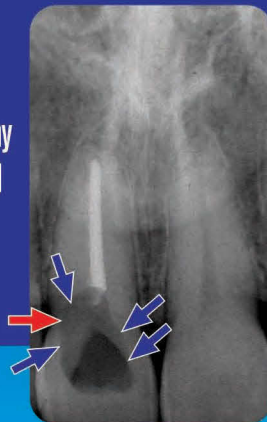
Round and fissure burs were designed for cavity preparations, not endodontic access

- Round & fissure burs offer limited guidance
- Large head diameter reduces canal visibility
- Lack of control can lead to runoff, creating gouging
- Gouging can increase risk of perforation



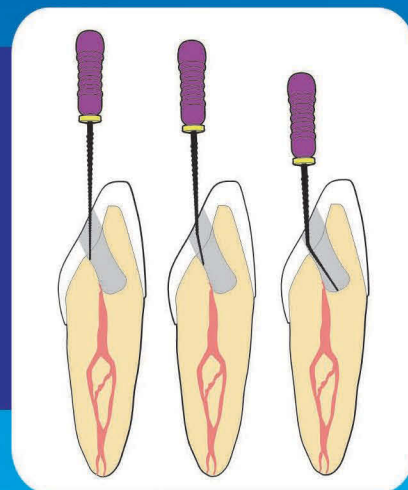
Round & Fissure bur gouging can produce:

- Destruction of high-risk anatomy
- Elimination of vital peri-cervical dentin



Irregular access pathway created by round & fissure burs:

- Can produce file deflection
- Difficult to locate calcified MB2 canals



"Put away your round burs and Gates Glidden Burs, and pick up the SS White EndoGuide<sup>®</sup> Burs. They eliminate bur run-off and create a guidance system that finds canals much more effectively and conservatively."



- David J. Clark, DDS

"EndoGuide<sup>®</sup> Burs have eliminated my dependence on round burs and the ultrasonic tips. EndoGuide Burs offer greater precision and efficiency in creating straight-line access and identifying canals in molar teeth."



- John A. Khademi, DDS, MS

# EndoGuide® Burs: Design Creates



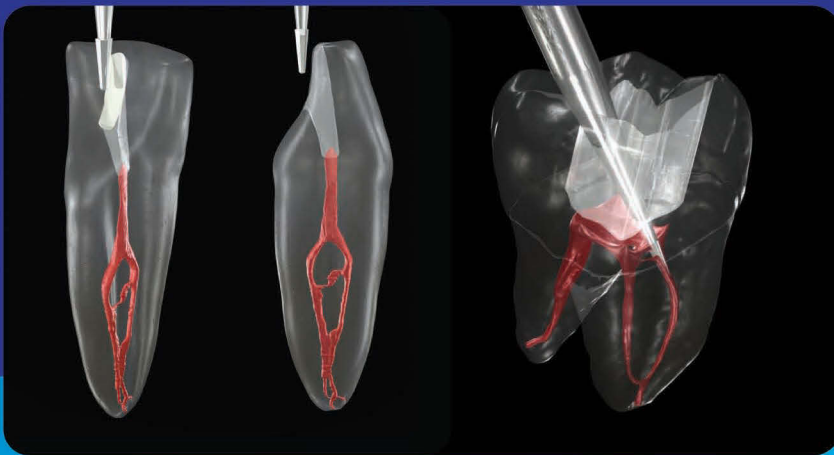
Replace  
**ALL**  
of these  
with



## EndoGuide® Burs are designed to:

- Reduce dependence on expensive ultrasonic tips
- Reduce overall treatment time with improved efficiency
- Gain access to calcified & hidden canals with greater precision
- Create optimal funnel shaped access for safer file introduction
- Conserve vital peri-cervical dentin to aid in resistance to fracturing

**ENDOGUIDE®**  
PRECISION MICRO ENDODONTIC BURS



EndoGuide® Burs act as a self-centering guide to access canal

- Straight-line pathway<sup>1</sup> reduces risk of gouging and perforation
- Funnel-shaped access increases visibility to canal<sup>1</sup>

<sup>1</sup>when used in conjunction with incisal access technique for canal entry

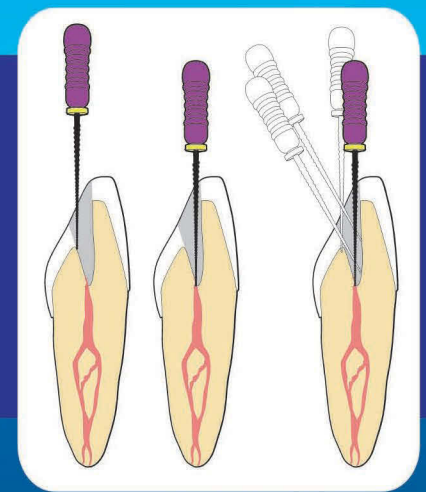
### Precise pathway created by EndoGuide® Burs

- Conical shape mimics canal to conserve vital peri-cervical dentin
- Stiff shank allows clinician to steer away from high-risk anatomy



### EndoGuide® Burs funnel-shaped access preparation creates

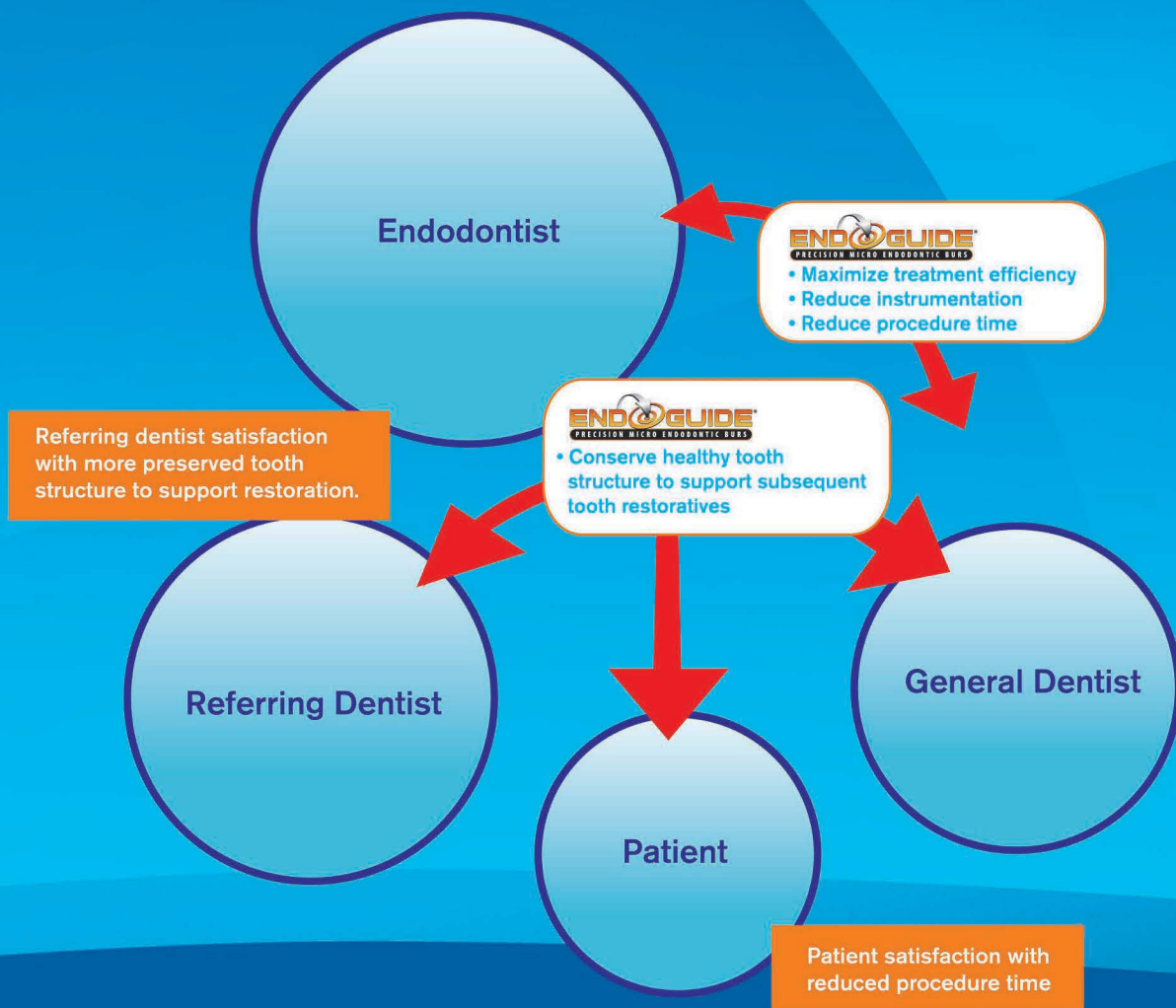
- Smooth, v-shaped access pathway:
  - Reduces file deflection
  - Permits unobstructed file entry



# Efficiency..... Conservation of Dentin

## Healthy Dentin Conservation Strengthens the Foundation for Subsequent Tooth Restoration

EndoGuide® Burs are designed to allow clinicians to preserve the inherent strength of the tooth to help support subsequent tooth restoration and improve final treatment outcomes for the patient.



Learn more about how SS White® EndoGuide® Burs can benefit your practice by visiting [endoguide.net](http://endoguide.net)

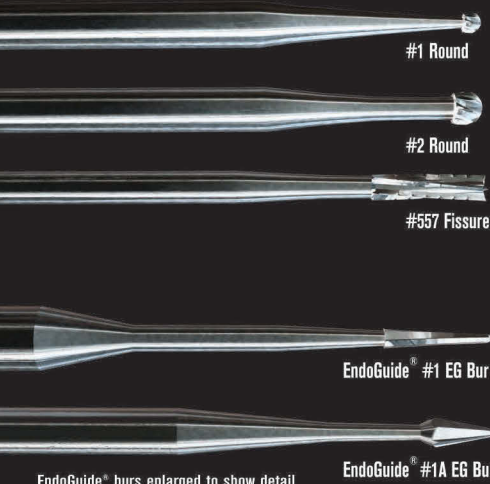
# Designed for Modern Endodontics with the patient in mind



EndoGuide<sup>®</sup> Burs are an innovative set of carbide burs designed for non-surgical endodontic procedures developed in conjunction with Dr. David Clark DDS and Dr. John A Khademi DDS MS.

EndoGuide Burs are designed for:

- Root canal access and exploration
- Tactile and magnification-enhanced endodontics
- Use by endodontists and general dentists



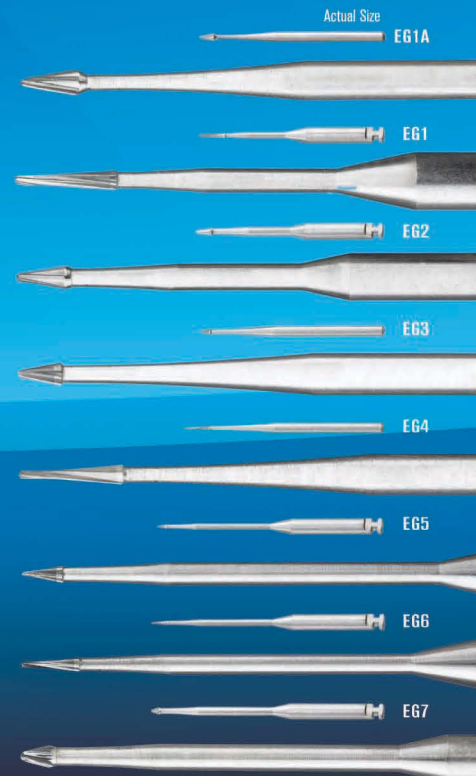
Compare to  
conventional access burs

EndoGuide<sup>®</sup> Burs  
offer ideal size and shape

- Micro-diameter tip leads to more conservative access
- Conical shape leads to more efficient access

EndoGuide<sup>®</sup> burs enlarged to show detail

## Bur Series



EndoGuide<sup>®</sup> burs enlarged to show detail  
1. U.S. Patent No. 6,257,889 B1

"This is an ideal bur series for magnification-driven endodontics.



The long shanks facilitate vision when using magnification and the conical tip design creates a smooth funnel-shape prep that make reading the 'dentine map' easier; more efficient than ultrasonics for difficult canal location."

- Eric Herbranson, BS, DDS, MS

## EndoGuide<sup>®</sup> Molar Kit (#18051) For Endodontic Exploration

Contains seven EndoGuide™ Burs designed to increase visibility and control during endodontic exploration in molars when locating hidden canals, navigating deeply calcified canals and troughing between canals.




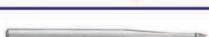
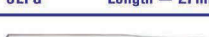



## EndoGuide<sup>®</sup> Anterior/Bicuspid Kit (#18052) For Endodontic Access & Exploration

Contains all instrumentation to create endodontic access through metal, porcelain and zirconia, featuring SS White<sup>®</sup> Great White<sup>®</sup> #2 metal cutting bur, Great White<sup>®</sup> Z Diamonds along with four EndoGuide™ Burs ideally suited for locating and accessing single root canals in anterior/bicuspid teeth.




NOTE: Initial access and de-roofing in molars should be performed with either the Great White<sup>®</sup> #2 Bur or Great White<sup>®</sup> Z Diamonds supplied in the EndoGuide<sup>®</sup> Anterior/Bicuspid Kit for Endodontic Access and Exploration, order #18052.



## Kit and Bur Reference Guide: SS White<sup>®</sup> EndoGuide<sup>®</sup> Precision Micro Endodontic Burs

Bur # SSW Order #	Bur Photograph	Head Length (mm)	Tip Diameter (mm)	Back Diameter (mm)	Reorder Package Size	Included in: Anterior/Bicuspid Kit #18052	Included in: Molar Kit #18051	Recommended Applications
EG1A #15066	 SLFG* Length = 27mm	2.5	0.33	1.07	5-pk	YES	NO	• Initial access in non-restored anterior and bicuspid teeth
EG1 #14780	 SLRA* Length = 27mm	3.5	0.28	0.71	5-pk	YES	YES	• Deep troughing • Deeper orifice enlargement and calcified canals
EG2 #14779	 SLRA* Length = 27mm	2.5	0.33	1.07	5-pk	YES	YES	• De-roofing pulp chamber • Deep orifice enlargement and calcified canals
EG3 #15023	 SLFG* Length = 27mm	1.5	0.28	0.71	5-pk	YES	YES	• Initial access for small incisors • Troughing and navigating calcified canals
EG4 #15029	 SLFG* Length = 29mm	3.5	0.28	0.71	5-pk	NO	YES	• Deep troughing • Navigating super ovoid and calcified canals
EG5 #14794	 XLRA* Length = 34mm	1.5	0.28	0.71	5-pk	NO	YES	• Deep troughing • Retrieving separated instruments • Navigating deeply calcified canals
EG6 #14795	 XLRA* Length = 34mm	2.5	0.28	0.71	5-pk	NO	YES	
EG7 #14786	 XLRA* Length = 34mm	1.5	0.33	1.07	5-pk	NO	YES	

### SS White Great White<sup>®</sup> Carbides and Diamonds:

GW2 #15062 #13095	 FG Length = 19mm	4.0	N/A	1.19	10-pk 100-pk	YES	NO	• Metal crown access or removal • Amalgam restoration and decay removal • Molar initial access and de-roofing
GWZ 856-018 (Round End Cone) #18161	 FG Length = 22mm	8.0	1.10	2.2	5-pk	YES	NO	• Ceramic/zirconia crown removal • Molar initial access and de-roofing
GWZ 801-018 (Round) #18163	 FG Length = 19mm	1.8	N/A	1.90	5-pk	YES	NO	• Initial access through ceramic/zirconia crowns • Molar initial access and de-roofing

\*NOTE: SLRA (Surgical Length Right Angle) and XLRA (Extra-Long Right Angle) shanks are for use in right angle slow-speed handpieces; SLFG (Surgical Length Friction Grip) shanks are for use in friction grip high-speed handpieces.

### Place your order for SS White<sup>®</sup> products in one of three ways:

- Contact your certified SS White<sup>®</sup> dental dealer
- Call 800-535-2877 and a knowledgeable SS White<sup>®</sup> Burs customer service representative will assist you. Your order will be processed and transferred to the dealer of your choice.
- Fax or mail your order to SS White<sup>®</sup> Burs: You must indicate the dealer of your choice on your order. Fax # 732-905-0987. Mailing address: SS White<sup>®</sup> Burs: 1145 Towbin Avenue, Lakewood, NJ 08701

SS White<sup>®</sup> Burs exclusively distributes its products through a network of SS White<sup>®</sup> certified dental dealers listed at [www.sswiteburs.com](http://www.sswiteburs.com).

PRACTICE INSPIRATION™

**SS WHITE<sup>®</sup>**

800.535.2877 | [www.sswiteburs.com](http://www.sswiteburs.com)

1145 Towbin Avenue Lakewood, New Jersey 08701

[endo-guide.net](http://endo-guide.net)

EndoGuide<sup>®</sup> Detail Aid



SS White<sup>®</sup>, Great White<sup>®</sup> and EndoGuide<sup>®</sup> are a registered trademarks of SS White Burs, Inc. ©2011 SS White Burs, Inc. All Right Reserved. Literature item #64598 rev.#3