



**Sede Legale ed Amministrativa / Headquarters**

CEFLA s.c.  
Via Selice Provinciale, 23/a  
40026 Imola (BO) - Italy  
t. +39 0542 653111  
f. +39 0542 653344

**Stabilimento / Plant**

Via Bicocca, 14/C  
40026 Imola (BO) - Italy  
t. +39 0542 653441  
f. +39 0542 653601

Due to our policy of constant technological upgrading, technical specifications may be subject to change without prior notice. According to the standards in force, in non-EU areas the availability and specifications of some products and/or characteristics may vary. Please contact your local distributor for further information.

CWSADGB201500

05/2020

# WS Aerosol Defender

## Water Saliva Aerosol Defender



Making Your Life Better.

# AIRBORNE CONTAGION

The ongoing worldwide Covid-19 pandemic concerns an airborne disease. It therefore poses a health risk for dental surgery personnel during treatment as 'social distancing' from the patient simply cannot be observed.

Given the number of procedures, which generate a considerable quantity of aerosol, surgery personnel are highly exposed to the risk of coming into contact with saliva, mucus and blood from persons infected with Covid-19 (whether symptomatic or asymptomatic).

**WS Aerosol Defender** is part of the set of measures and devices that aim to interrupt the epidemiological chain.



WS Aerosol Defender OFF



WS Aerosol Defender ON

*WS Aerosol Defender uses a flat, laminar spray interceptor that maximises the suction effect while minimising obstruction for the dental team. To optimise positioning around the oral cavity the device features a dual rotating-sliding system.*

*WS Aerosol Defender can easily be connected to any large cannula terminal (Ø16 mm); it is, moreover, operated by the suction system of the dental unit itself.*

## THE IMPORTANCE OF INTERCEPTING AEROSOL

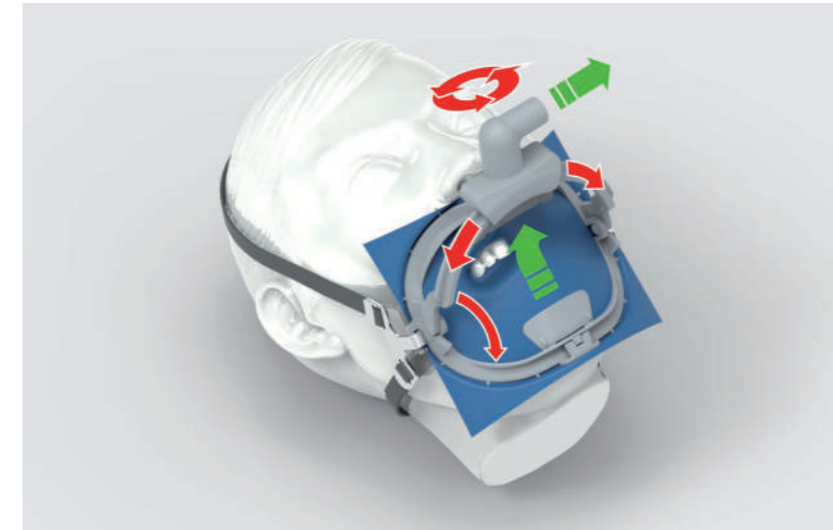
It's possible to limit the risk of virus transmission by way of a suction device that intercepts the exhaled air, saliva droplets and aerosol emitted by patients and dynamic instruments.

## PROTECTION FROM AIRBORNE DISEASES

Using the WS Aerosol Defender device during dental treatment protects personnel working close to the patient's oral cavity. Reducing aerosol significantly reduces the risk of spreading pathogens in the air surrounding the oral cavity. It follows that proper use of the device protects against contamination from airborne diseases that derive from aerosol contaminated with viruses, bacteria or other toxic substances.

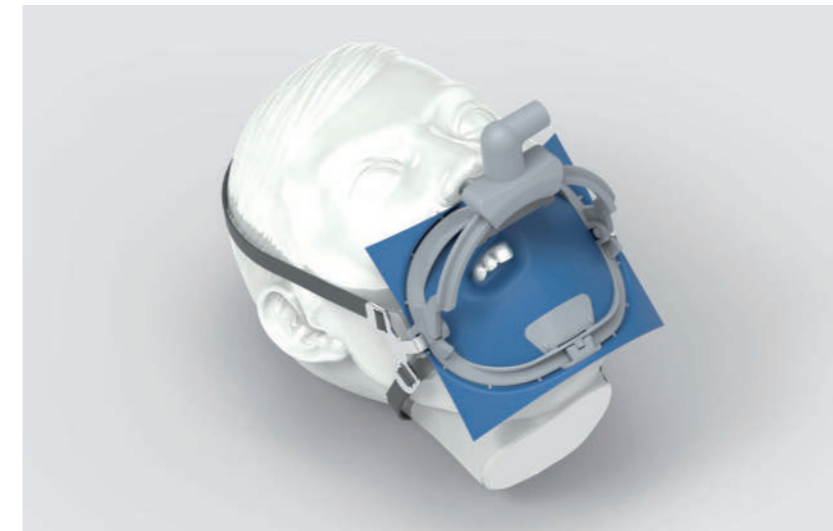
# WS Aerosol Defender

## Water Saliva Aerosol Defender



## ERGONOMIC

Suitable for all treatment circumstances, the device can be used both for treatments requiring use of the dam and those that do not require it. It does not in any way hinder treatment and maintains the acquired ergonomics. Thanks to the structure of the device and the integrated mobile arch system for the dam, WS Aerosol Defender also acts as a handy dam tensioner to optimise its stability. Even where treatment is performed without a dam, a combination of practical rubber bands and chin adapter allows correct positioning on the patient's face.



## EFFECTIVE

While a fixed suction system intercepts, without distinction, a part of the aerosol, WS Aerosol Defender is designed to have a targeted effect on the quadrant of the oral cavity requiring treatment. Its dual rotation system, consisting of mobile arch and connector, optimises suction effectiveness in every situation. Furthermore, the flat shape of the interceptor allows for a broader suction zone and better aerosol capture than with a circular opening.



## VALUE FOR MONEY

WS Aerosol Defender constitutes an investment for dentists who wish to avoid single-use material waste. To ensure maximum hygiene with each re-use, the device can be dismantled and autoclaved some 200 times. The resulting cost per application is therefore very low.